

# Management Proposal – Northern Cod

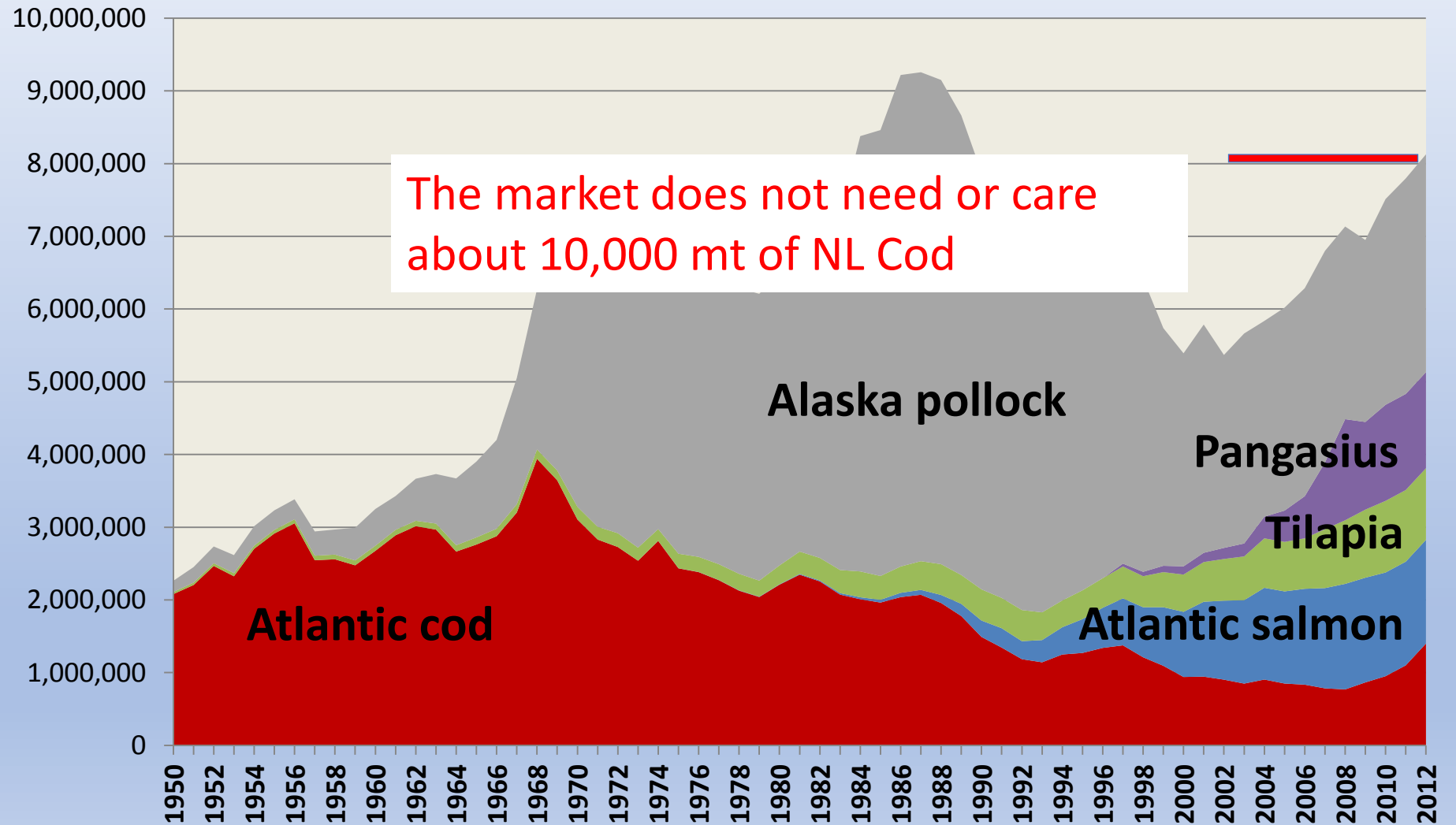
Presented by

The Groundfish Enterprise Allocation Council

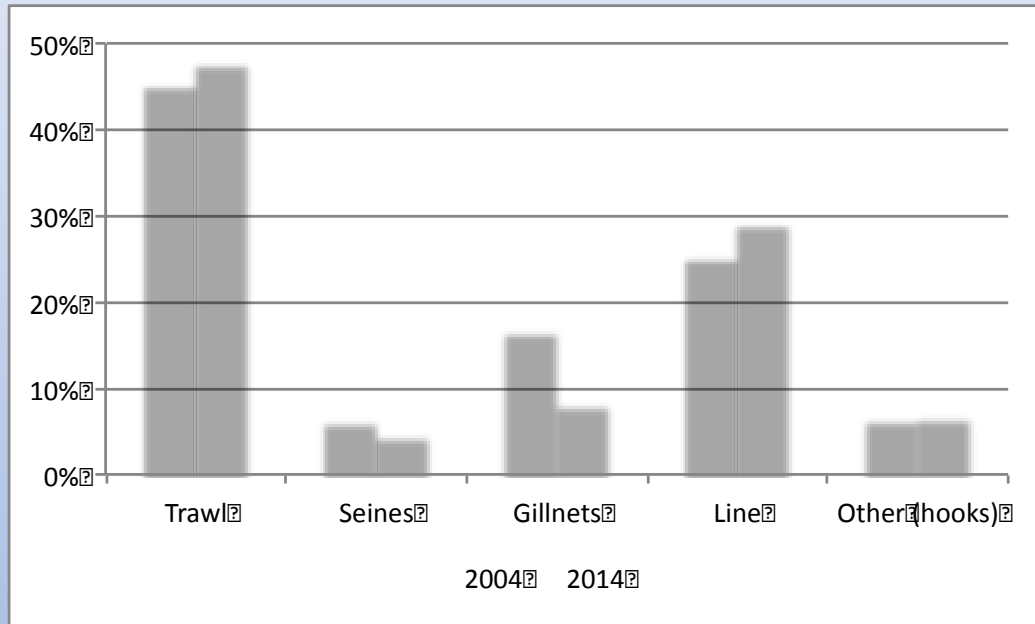
April 2017

# The World Cod Markets

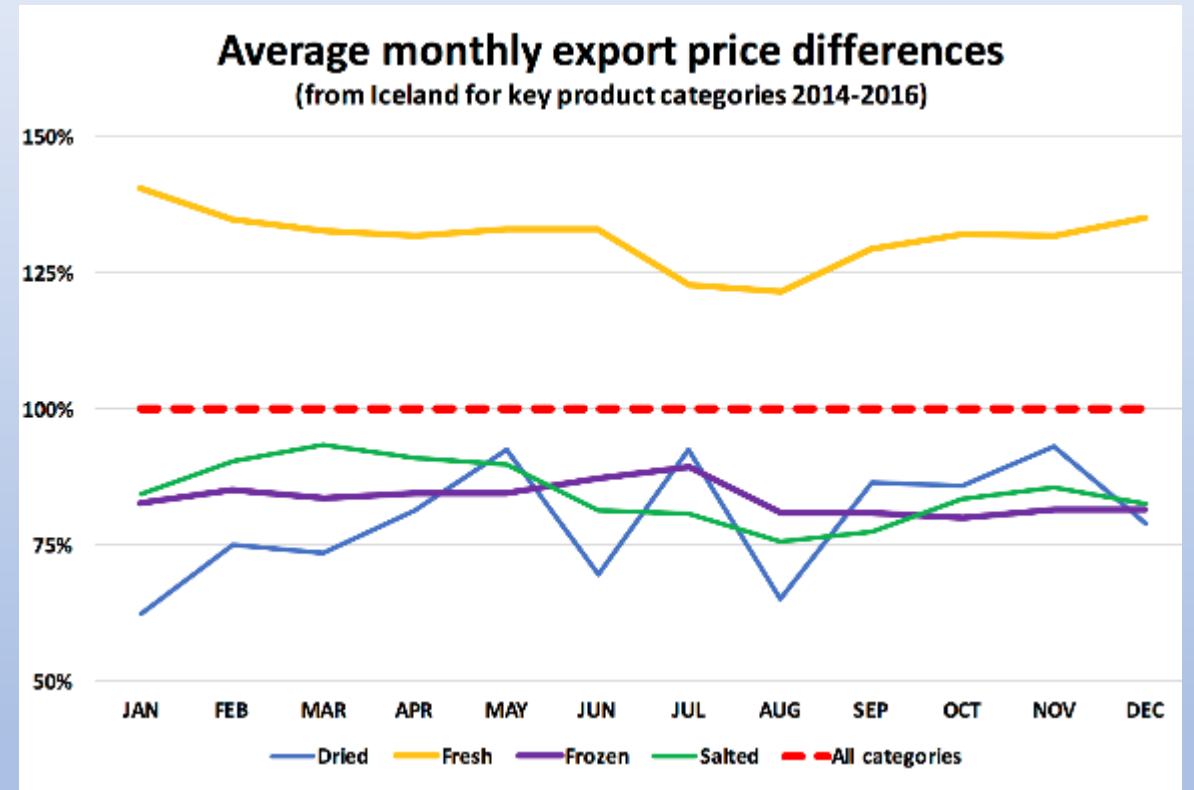
- Cod is a small share of whitefish
- Whitefish dominated by Pollock and aquaculture
- Situation is stable
- NL remains a small producer with reasonable market share for some products



# Trends in High-Value Producers



Shifting to quality-oriented gears.....

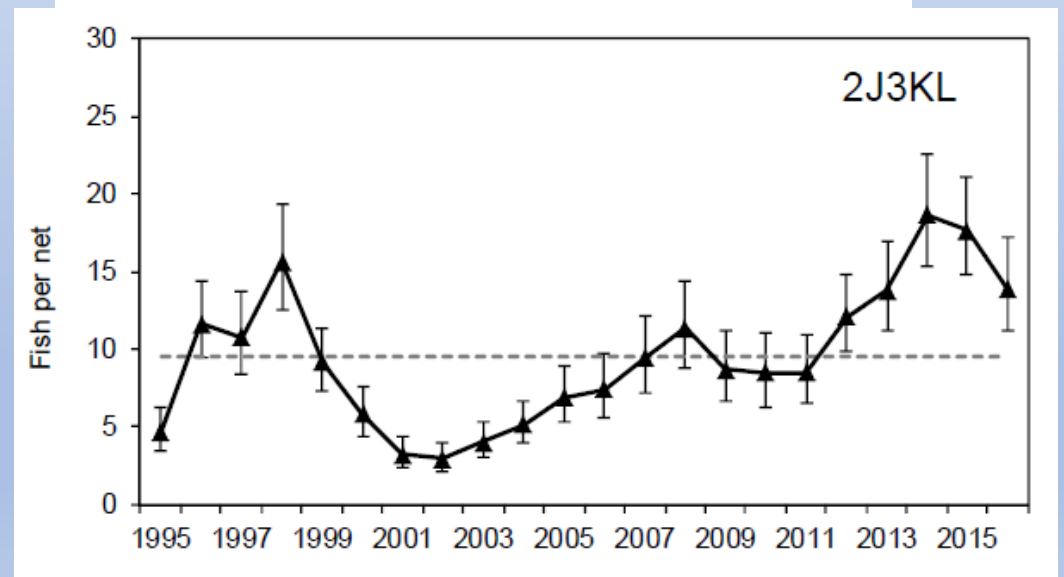
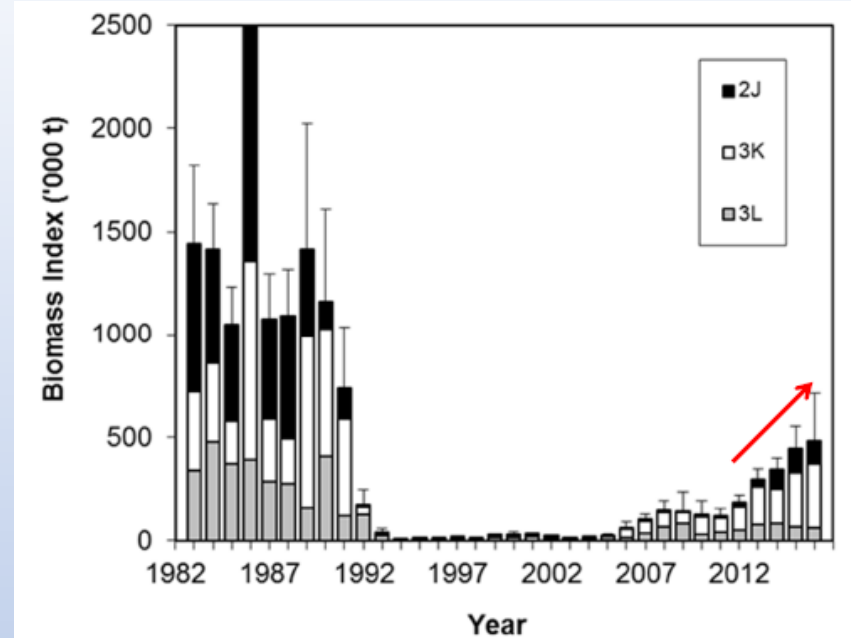


To feed higher value markets!

Note – Mid-summer price drop is not linked to supply, but a failure of the market to take lower quality fish

# Domestically:

- Stock Status:
  - Stock remains in the critical zone
  - The unbalanced recovery has stalled– why only 7%?
  - Mixed stock signals
  - Sentinel index continues to decline
  - 2016 Total Catch > 10,000 mt (15,000?)
  - Neighbouring stocks challenged
- External Pressures
  - Shellfish TACs in decline
  - 2017 combined landed value from crab/shrimp likely to be similar to 2016, possibly slightly higher
  - Shellfish processing sector challenged



# What Is our Goal?

## Rebuilding a Stock:

- Achieve and maintain Blim/Bmsy
- Guide TAC setting by stock productivity (R, M, prey)
- Re-invest our capital
- TAC follows stock growth

## Building A Future:

- Improve Quality
- Lucrative export markets
- Market improvements will benefit all sectors
- TAC carefully follows sustained stock growth – **no room for mistakes!**

# 2017 Stewardship Fishery - Key Targets

- **Removals to be Lower than or No Higher than 2016**
  - Include recreational
- **Relate Harvest to Health**
  - Local exploitation rates may be high – this must be avoided
  - Balance the recovery
- **Impacts on Migratory Cod Stocks**
  - We know cod from 3Ps migrate in and out of 2J3KL
  - Stewardship fishery should not pressure other stocks
- **Maximize Quality**
  - Year-Round Supply
  - We are doing better – how well could we do?

# Balanced Approach will Help Secure Better Economic Returns for All Sectors

## Offshore Stewardship

- 500 mt for the winter period
- Catch processed in NL
- Samples taken throughout stock area for:
  - Research
  - Validation
  - Development
- Full reporting after fishery concludes

## Inshore Fishery

- Open Aug 13<sup>th</sup> for quality
- Mitigate potential impacts to 3Ps cod in 3L
- Area based catch limits to protect lagging components
- Full reporting after fishery concludes